



BaseballTips.com  
 email: coach@baseballtips.com  
 Phone: 1-800-487-7432

## Directions for 70x15.5x12 Deluxe Commercial Frame

A	10' lengths of 2" EMT (Lowe's-72721   Home Depot-580031)	12
B	3' x 2' Elbows	8
C	Eyebolts and Nuts	12
D	10' lengths of 1½" EMT (Lowe's-72719   Home Depot-613975)	4
E	Angle Supports	4
F	2 ¼" Muffler Clamps	4
G	Arch Ground Sleeves (2 1/4")	8
H	Angle Support Ground Sleeves (1 1/2")	4
I	Self-drilling screws	32
J	Carabiners	54
K	Drill Bit (for screws)	1
L	Lengths of Cable	3
M	Turnbuckles	6
N	U-Bolts	6

**Please review the parts that you received to be sure that you have all the parts.**

Start here

You will need to purchase concrete to secure your arches into the ground. We recommend one 60lb. bag of Quikrete per Arch Ground Sleeve(G) and half of a bag for each Angle Support Ground Sleeve(H).

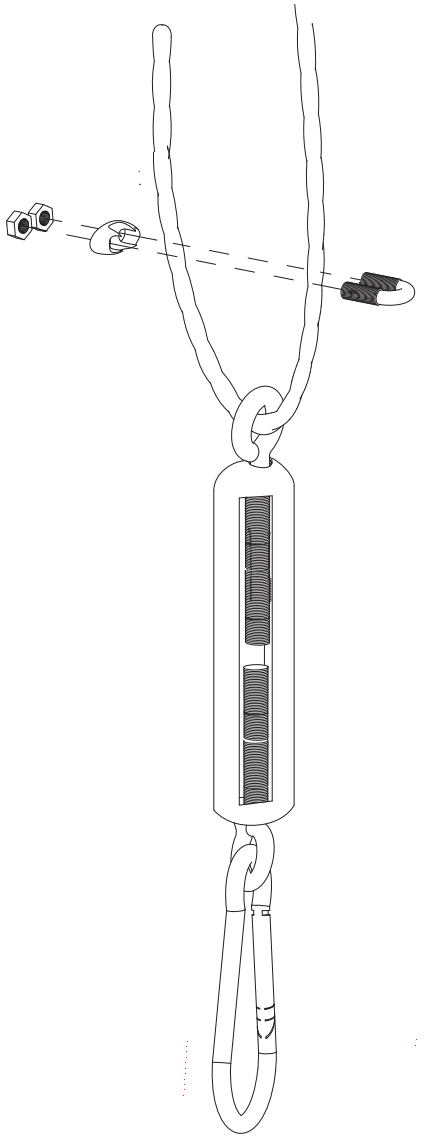
**Plan on taking 2 days to complete the batting cage frame.**

We recommend getting the Arch Ground Sleeves(G) set (Through step 10) on one day and then returning to finish the job the next day. This allows the concrete to fully set.

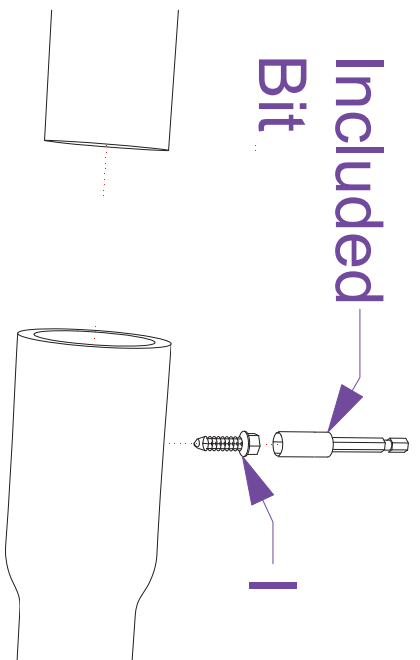
You will need about a 15½" x 72' area for your new batting cage. It is recommended that you mark off this area before starting.

1. **Lay out** four Elbows (B) with the 3' sides facing each other and the 2' sides going the length of the cage at the perimeter of the cage. Lay out the rest of the Elbows (B), between the end arches so that they are about 28' from each other.
2. **Assemble the Arches** by adding two 10' lengths (A) to the elbow's (B) 2' side for the vertical legs, and one 10' length (A) for the top cross member. Insert one of the self-drilling screws(I) at each junction where the 10' lengths (A) attach to the arches (B). Finish the rest of the arches the same way.
3. **Dig Holes for Arch Ground Sleeves(G)** about 6"- 8" in diameter and about 19"- 22" deep, using the assembled arches as a guide. This allows space for cement at the bottom. The ground sleeves (G) are 20" long including the fluted area. Make sure that, when set, the tops of the ground sleeves (G) are level with each other.
4. **Cement the Arch Ground Sleeves(G)** into the ground vertically level and level with each other. Remember to leave enough room to attach the upright with self-drilling screws.
5. **Install the Eyebolts(C)** into the arches. Start by drilling 5/16" holes in the center of the arch. Drill the other holes based on the width of your batting cage on either side of the middle (12' = 6' off center, 14'=7' off center, etc.). We recommend the eyebolts(C) on the end arches to be facing the middle, while the eyebolts(C) for the inner arches face down.
6. **Insert the Arches into the Ground Sleeves** after the concrete has been allowed to set for the recommended time. Secure the arches into the ground sleeves(G) with the self-drilling screws (I)
7. **Assemble the Angle Supports** by inserting one of the 1½" EMT poles(D) into the angle support(E) and securing it with a self drilling screw(I). Then insert the other end of the pole(D) into an Angle Support Ground Sleeve(H) and securing it with a self drilling screw(I).
8. **Dig holes for the Angle Support Ground Sleeves(H)** using the assembled angle supports as a guide. The angle supports will be inside the frame 1' from the top at about a 40° angle.
9. **Attach the Angle Support** to the Arch using the Muffler Clamp(F). The ground sleeve will be loose in the hole you just dug.
10. **Cement the Angle Support Ground Sleeves** into the ground. Make sure you still have access to the self-drilling screw you used to secure the pole(D) to the angle support(H) in case you have to take down your frame.
  - **For Installing Our Cable Hanging Kit** •
11. **Create your Cable Assemblies** by feeding the cable(L) through the turnbuckle(M) and securing a loop with the u-bolt(N). Now feed the cable through the inner arch eyebolts and create a loop on the other end of the cable(L) using another u-bolt(N). Repeat for the remaining cable assemblies.
12. **Attach the Cable Assemblies to the End Arches** using carabiners. Tighten the cable so there is no sag. Don't overly tighten the cable though. Some sag once the batting cage is hung is an industry standard. And repeat for the remaining cable assemblies.
13. **Attach the Batting Cage** to the cable using carabiners, starting at one of the end arches, attach the batting cage to all 3 cables and work your way down the length of the cage.
14. **Play ball!!!!**

# Cable Assembly



# Pipe Assembly



# Arch Assembly

